

Learning Commons: What's Working?

John Culshaw

Professor and Associate Director for
Administrative Services

University of Colorado at Boulder

Student Body Profile

- 30,000 students
(5,000 graduate)
- 6,000 students live in residence halls
- Most students traditional college age



The Need



- Norlin facility improvements
- Call for 24/7 space
- Changing learning styles and needs
- Norlin Renaissance Plan

The Plan

- Enable student work
- Link space to learning
- Pervasive technology
- Flexible and collaborative
- Address student needs holistically
- Integrate the outdoors



















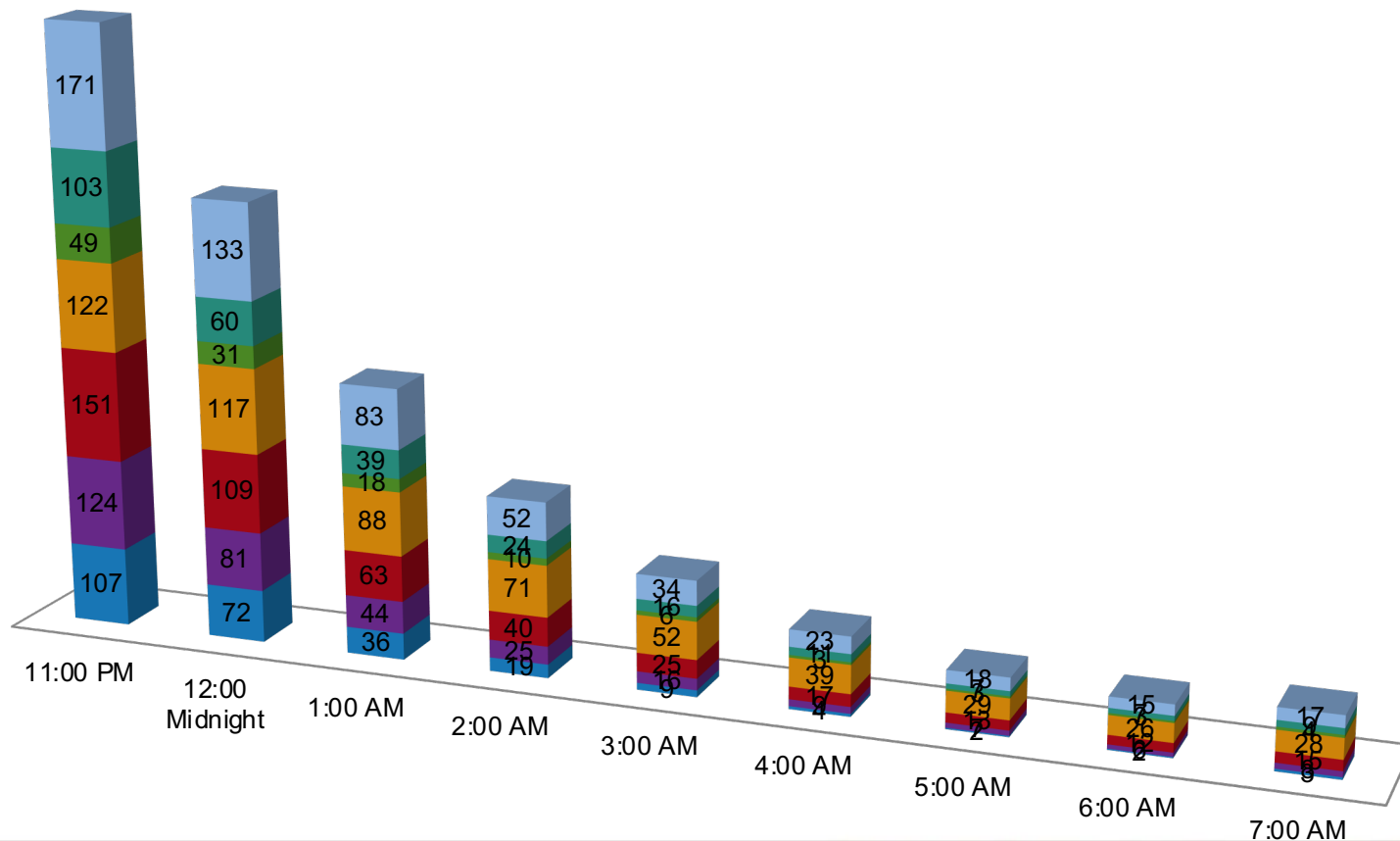


Measuring Success

- Overnight usage counts
- Computer usage counts
- Student Comments
- Café proceeds

Norlin Commons Average Monthly Usage by Hour

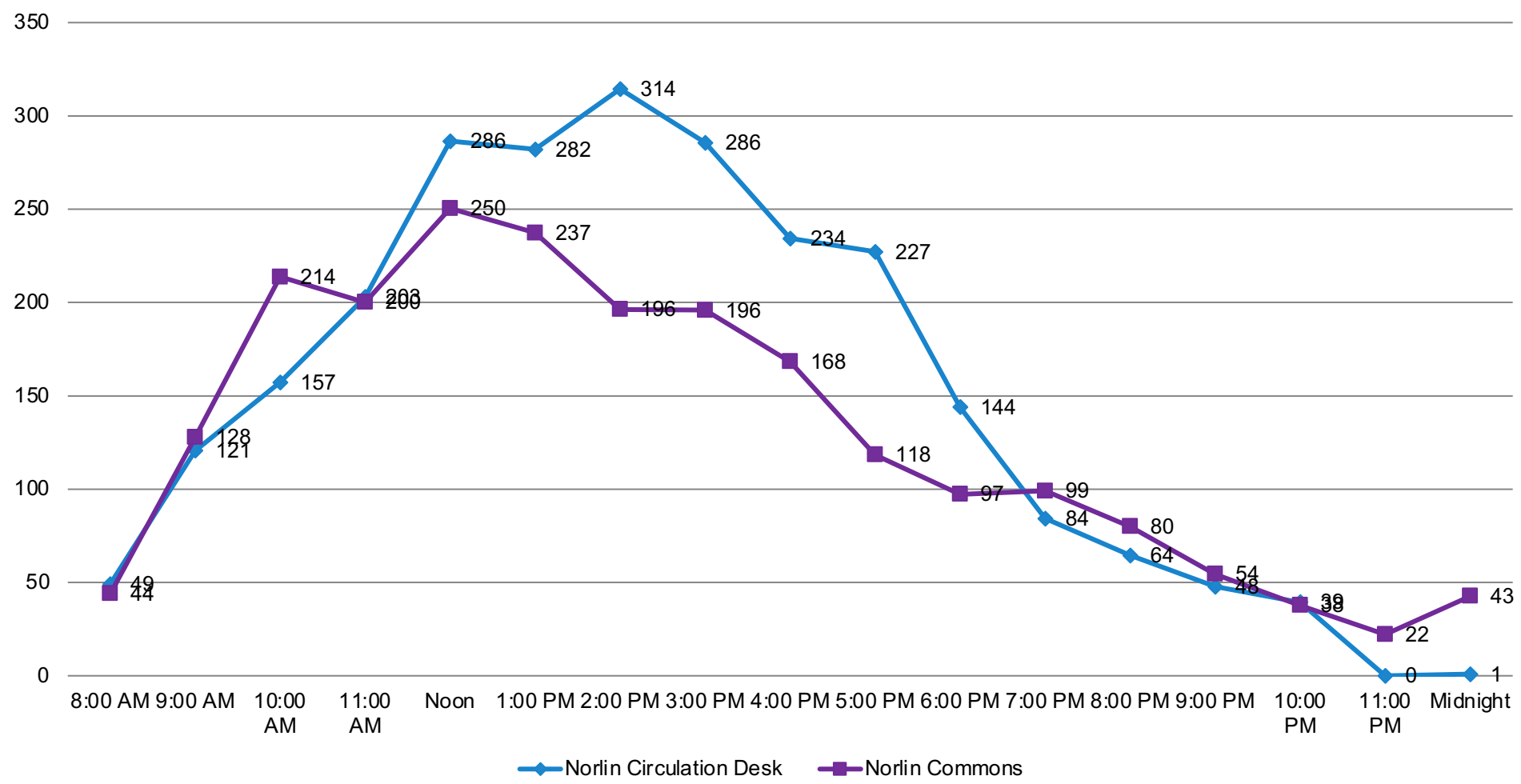
■ Sep-09 ■ Oct-09 ■ Nov-09 ■ Dec-09 ■ Jan-10 ■ Feb-10 ■ Mar-10



Commons Computer Usage

- 60 fixed workstations, 120 laptops
- 5,500 unique logins during Jan-Feb
- 2,728 unique logins on laptops
- 48 minutes average on desktops
- 72 minutes average on laptops

Average Items Checked out by Hour, Feb 2010



Student Feedback

The Good:

“Awesome”

“Finally a 24-hour space”

The Expected:

“Open earlier on Sundays”

“Keep the rest of the library open later”

“Clean the bathrooms”

The Odd:

“Needs a Jacuzzi hot tub...”



Student Space Utilization Study







The Future

- Revisiting Norlin Renaissance Plan
- Never enough power
- Need more desktop computers
- Enhance other spaces, including branches

Success!

- High usage
- Safe space contributes to campus life
- Students have returned to the library