



THE OHIO STATE UNIVERSITY

UNIVERSITY LIBRARIES

# *Snapshots of Efforts:*

**Institutionalizing Digital Scholarship within a  
Library Organization**

[#cni21s](#) | [go.osu.edu/libraries](http://go.osu.edu/libraries)



# Snapshots



[This Photo](#) by Unknown Author is licensed under [CC BY-SA](#)

- Digital Scholarship landscape @ Ohio State
- Snapshots:
  - Building Capacity for Digital Scholarship Support
  - Digital Preservation and Access Workgroup
  - University Libraries-wide discussion and prioritization for additional digital scholarship support
- Conclusions thus far and “What’s next?”



# Land Acknowledgement





# Landscape at Ohio State



- Research-intensive
- Land-grant institution
- Top 10 ARL Library
- Specialized collections
  
- New President
- Soon-to-have a new Provost and CIO



# University Libraries & Digital Scholarship...

- Providing services as requested for years.
- Hired faculty with specific expertise since 2016.
- Varying levels of maturity in amount of support provided.
- Often depended on who you know/who would advocate for the research.
- Gaps were not often apparent because support was variable.
- Growing interest among library faculty and campus researchers for digital scholarship support.

OSU.EDU Help | B...

**THE OHIO STATE UNIVERSITY**  
UNIVERSITY LIBRARIES

HOME | EVENTS | ROOMS & TECHNOLOGY | CONSULTATIONS | NEWS | RESO...

### Research Commons Research Support is Available Online

Research Commons continues to provide support for Ohio State students, faculty and staff through our website, including our [Research Guides](#) and [Resources Page](#). If you have questions about [Geographic Information Systems](#), [Data Visualization](#), [Digital Humanities](#), [Research Impact](#), or other topics related to research support, please email: [researchcommons@osu.edu](mailto:researchcommons@osu.edu).

[Learn More about Library Services During COVID-19.](#)

Ohio State has resources for students continuing coursework online at [keeplearning.osu.edu](http://keeplearning.osu.edu). There are also resources available for instructors transitioning to teaching courses online at [keepteaching.osu.edu](http://keepteaching.osu.edu).

### How Can We Support Your Research?

The Research Commons provides a suite of services and a space through which researchers can explore collaborative, interdisciplinary, and emerging research methods and connect with experts for support at any stage of the research process. Browse our focus areas, and let us know how we can support your research!

FINDING DATA	MANAGING DATA	VISUALIZING DATA	DIGITAL HUMANITIES
GIS & MAPPING	RESEARCH IMPACT	PROJECT HELP	RESEARCH GUIDES



# Building Capacity for Digital Scholarship Support

A Professional Development Program for Librarians



[#cni21s](#) | [go.osu.edu/libraries](http://go.osu.edu/libraries)

“Collaboration” by Krisada, TH, *The Noun Project*



# The Pilot Year: 2019

## Workshop Options

- a general overview of the digital scholarship methods and tools
- a discipline-specific overview of methods and tools
- intensive training on a specific method, tool, or topic.

## Asks of Participants

- develop at least one annual goal related to digital scholarship
- join the campus DH Slack
- participate in the fall University Libraries' Digital Scholarship Forum
- attend a DH-related professional conference



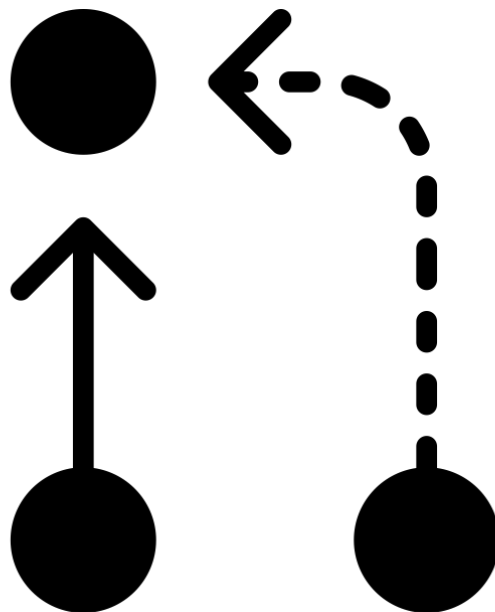
## Workshops Attended

- "Digital Humanities for Japanese Culture," Digital Humanities Summer Institute (DHSI), University of Victoria
- "Minimal Computing: Nimble Projects for Shaping and Sharing Histories," DREAMLab, University of Pennsylvania
- "Image Analysis with Deep Learning," Humanities Intensive Learning and Teaching (HILT), Indiana University-Purdue University Indianapolis
- "Digital Humanities and Visual Resources, "Slavic DH Summer Workshop," Princeton
- ARL Digital Scholarship Institute (DSI), University of Rochester
- "Fundamentals of Text Mining: Curating, Preparing, Analyzing, and Visualizing Textual Data" and "The Pedagogy of Digital Publishing," DLF Forum pre-conference workshops





# The “Lost” Year(s): 2020





# Digital Preservation & Access Workgroup



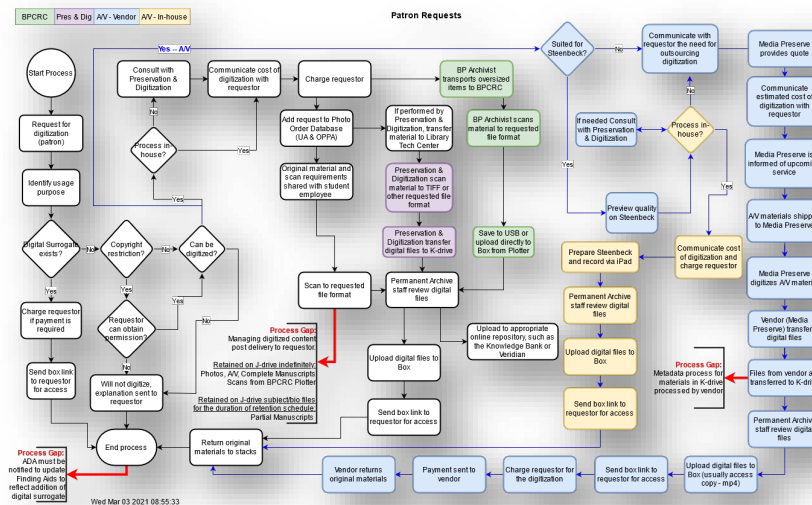
[This Photo](#) by Unknown Author is licensed under [CC BY-SA-NC](#)

- Grassroots
- Cross-functional
- Consistent Strategies
- Knowledge Management
- Transparency
- Areas of focus
- [go.osu.edu/libraries-dpa](https://go.osu.edu/libraries-dpa)



# DP&A Intersection w/Digital Scholarship

- Intersections and Gaps
- SIPOC/RACI/Brainwriting
  - [go.osu.edu/dpa-cni-20f](http://go.osu.edu/dpa-cni-20f)
- Need for:
  - articulated prioritization
  - transparent governance
- Digital Content Policy & Governance
  - [go.osu.edu/dpa-digital-content-policy](http://go.osu.edu/dpa-digital-content-policy)
- Balancing desires vs. resource limitations





# Digital Scholarship Additional Support Workgroup

- A workgroup sanctioned by the University Libraries' Management Committee (MC)
- What *additional support* does the Libraries need to provide for digital scholarship?
- Sub group had membership from across the libraries:
  - Acquisitions and Discovery
  - Area Studies
  - Collection Strategy
  - Digital Preservation
  - IT Infrastructure
  - Preservation and Reformatting
  - Research Services
  - Scholarly Sharing
  - Special Collections



# Digital Scholarship Working Group Process

- Iterative effort
- IDS program proposal (MC) → what additional needs exist (MC) → brainstorming → proposal for DS (MC) → use cases → capturing current services and gaps → prioritization process → shared around the library → recommendation to MC
- Recommendation will highlight both WHAT is needed and WHY



[This Photo](#) by Unknown Author is licensed under [CC BY-NC](#)



# Shared principles

- Libraries' support of digital scholarship should be **equitable, sustainable, and scalable**.
- Digital Scholarship Services that are offered should be **available with consistency across the library**, even if they're only available in one unit.
- There are services **we provide for the libraries that we don't provide for the broader campus** since we have faculty researchers within our unit.



# Lessons Learned Thus Far...

- Limitations of not “being in the same room”
- Getting hung up on details
- Having differing definitions
- Iterative/circular process to move forward  
–“Didn’t we already discuss this?”
- No one has total ownership
- Trying to hit a moving target both in the Libraries and on campus



[This Photo](#) by Unknown Author is licensed under [CC BY-SA](#)



# Lessons Learned Thus Far...

- Created opportunity to contemplate holistic approaches
- Encourage systems thinking
- Surfaced documentable gaps
- Pivot—consolidate documentation—revisit assumptions
- Able to reaffirm organizational priorities
- Assess current service levels
- Target keeps moving so it's not too late to take action
  - Pivot



[This Photo](#) by Unknown Author is licensed under [CC BY-SA](#)





# Contact Info



## **Dr. Leigh Bonds**

Assistant Professor, Digital Humanities Librarian  
614.292.0849 | [bonds.19@osu.edu](mailto:bonds.19@osu.edu)

## **Meris Mandernach Longmeier**

Associate Professor, Head of Research Services  
614.688.1446 | [longmeier.10@osu.edu](mailto:longmeier.10@osu.edu)

## **Dan Noonan**

Associate Professor, Digital Preservation Librarian  
614.247.2425 | [noonan.37@osu.edu](mailto:noonan.37@osu.edu) | [go.osu.edu/Noonan](http://go.osu.edu/Noonan)